



UVC600



Quality Components + Expert Design

820 (X-Axis) x 550 (Y-Axis) x 500 (Z-Axis) mm travels

36 x 36 x 36 m/min X, Y, and Z rapids

40-station swing-arm ATC

15,000 RPM in-line spindle

BBT 40 taper

Pre-tensioned ball screws minimize thermal deformation

φ600 mm table, 350 kg capacity

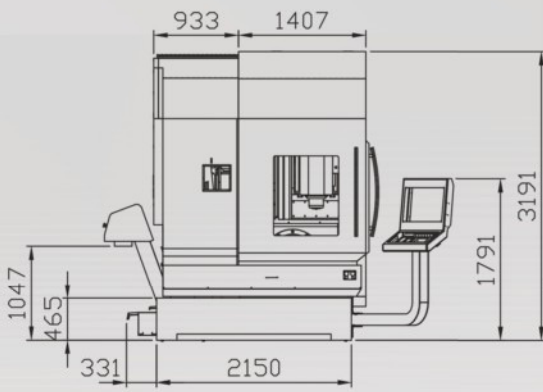
12,000 kg machine weight

Machine shown with
optional equipment

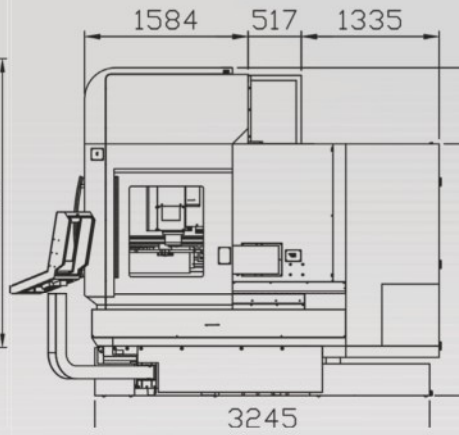
www.takumi-italia.it

Takumi

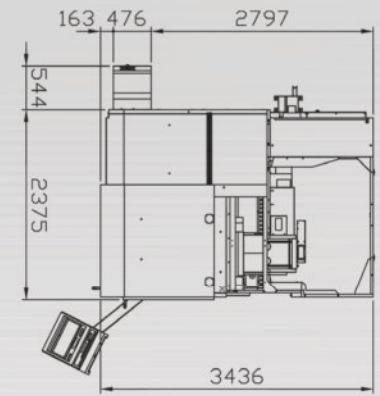
UVC600-Layout Drawings



Front View

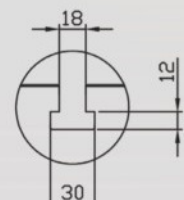
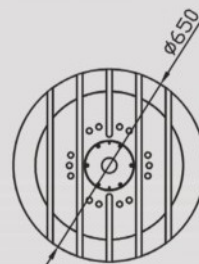
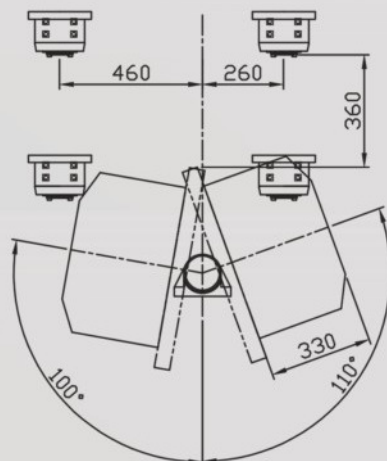
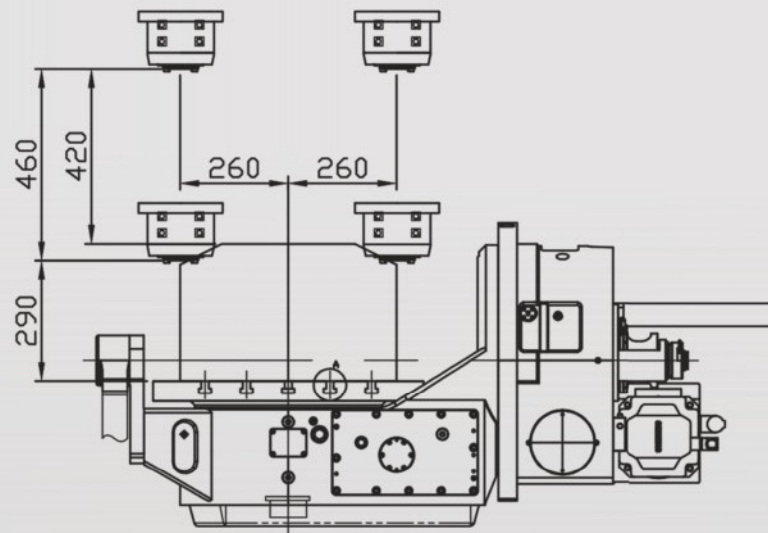


Side View

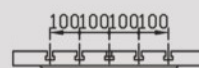


Top View

UVC600-Machining Area



細部拡大図 A 1:5



Mechanical Specification Sheet of UVC600 5-Axis Cantilever Type

Specifications	Unit	UVC600	UVC600-TT
TRAVEL			
X axis	mm		820
Y axis	mm		550
Z axis	mm		500
Distance From Spindle Nose to Table	mm		150~650
TABLE			
Table Dimension	mm		Diameter 600
Workpiece Max. Height	mm		500
Table Loading Capacity	kg		350
T-slot (width x number)	mm		14 x 5
SPINDLE			
Spindle Type	-		Direct-drive
Spindle Speed	rpm		15000,0
Spindle Motor Power (cont. / S6-40%)	kW		S1/S6-40% 10/14
Spindle Max. Torque (cont. / S6-40%)	Nm		63.7/89.4
Spindle Taper	-		BBT40
FEED RATE			
Rapid Traverse (X/Y/Z)	m/min		36
Cutting Feed Rate	m/min		30
2-AXIS ROTARY TABLE			
Brand	Italy	LCM	LCM
Drive Type		Worm/Worm gear (STD)	Torque (OPT)
B axis Rotation Range	Degree	B-axis : +40° / -110°	B-axis : +40° / -110°
B axis Positioning Accuracy	"	±5	±2.5
B axis Rotation Speed	rpm	25	50
C axis Rotation Range	Degree	360°	360°
C axis Positioning Accuracy	"	±5	±2.5
C axis Rotation Speed	rpm	25	100
ATC & Tool Magazine			
Tool Magazine Type	-		Chain Type
Magazine Capacity	pcs		40
Max. Tool Diameter : (Adjacent pots Empty)	mm		Ø75 / Ø150
Max. Tool Length	mm		300
Max. Tool Weight	kg		7
SPACE & SYSTEM REQUIREMENT			
Pneumatic Pressure	kgf/cm ²		6
Electrical Power Consumption	kVA		80
Machine Net Weight	kg		12000,0
Others			
Controller			HEIDENHAIN TNC 640

